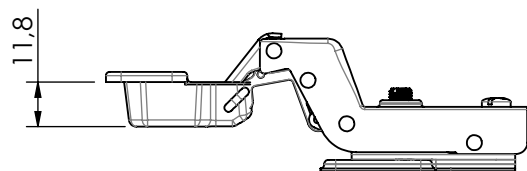
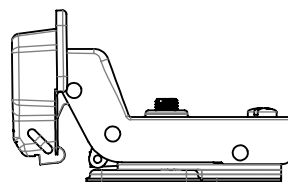


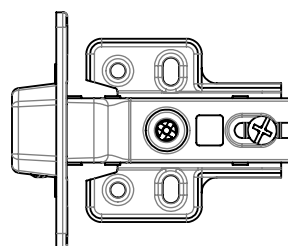
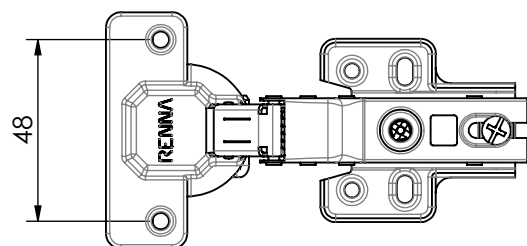
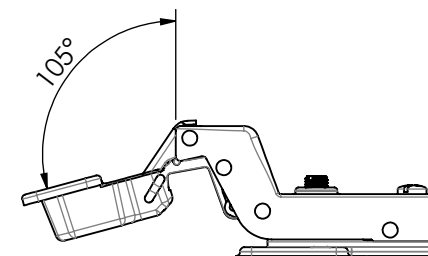
Aberta:



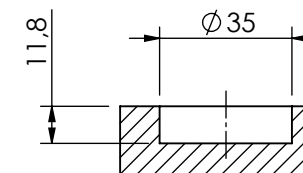
Fechada:



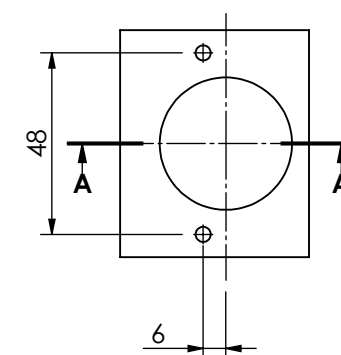
Abertura máxima:



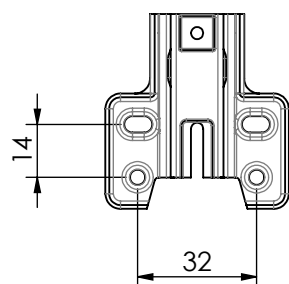
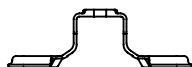
Caneco:



CORTE A-A



Calço:



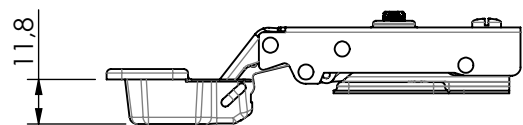
Características:

Dobradiça para móveis em aço, de 4 furos, calço fixo, com pistão 35mm, sem proteção do braço e parafusos, com ângulo de abertura de 105 graus.

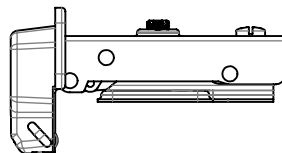
RENNA
— COMPONENTES —

Código:	3.650.2316	Denominação:	Dobradiça Slide-on Calço Fixo Super Alta	
Material:	Aço			
Observação:	Com pistão			
Data:	26/12/2016	Quantidade:	200 por caixa	
(54) 32226666 www.renna.com.br vendas@renna.com.br				

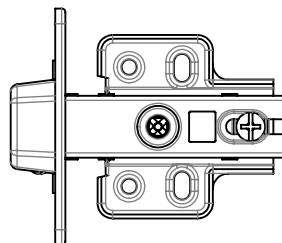
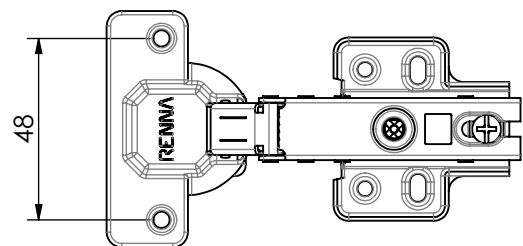
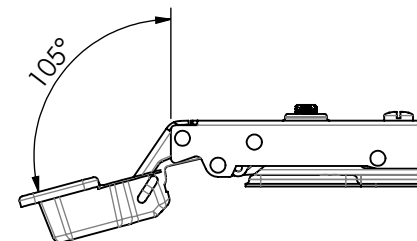
Aberta:



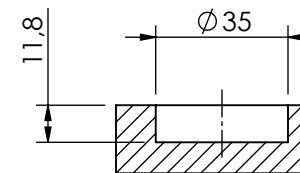
Fechada:



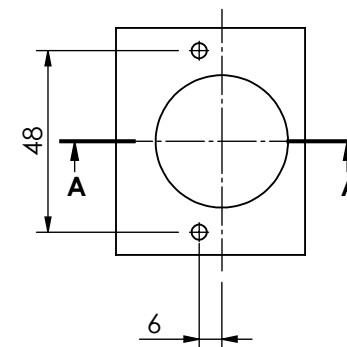
Abertura máxima:



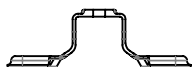
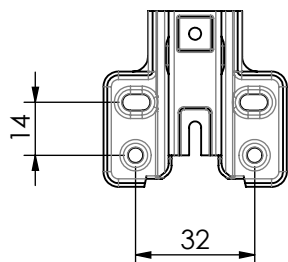
Caneco:



CORTE A-A



Calço:



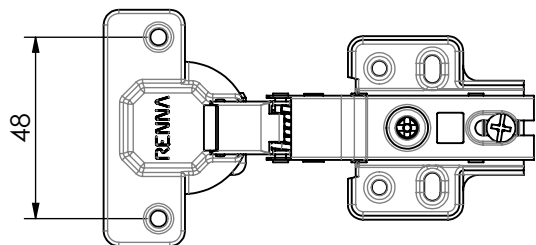
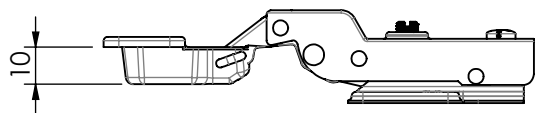
Características:

Dobradiça para móveis em aço, de 4 furos, calço fixo, com pistão 35mm, sem proteção do braço e parafusos, com ângulo de abertura de 105 graus.

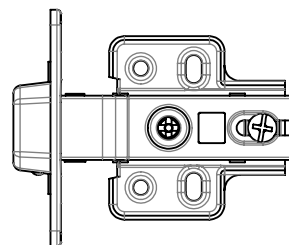
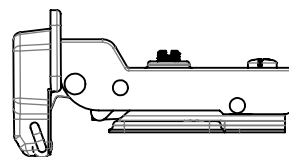


Código: 3.650.2314	Denominação: Dobradiça Slide-on Calço Fixo Baixa
Material: Aço	
Observação: Com pistão	
Data: 26/12/2016	Quantidade: 200 por caixa
(54) 32226666 www.renna.com.br vendas@renna.com.br	

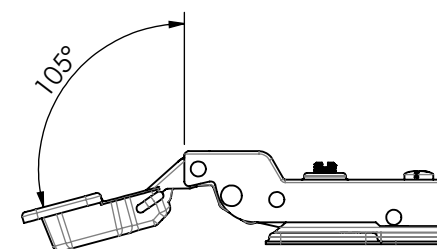
Aberta:



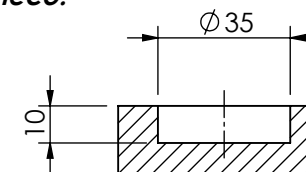
Fechada:



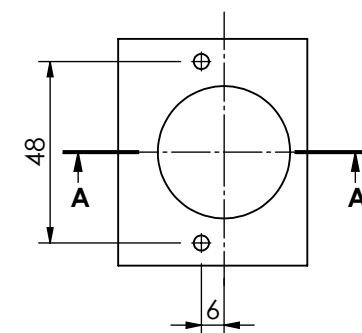
Abertura máxima:



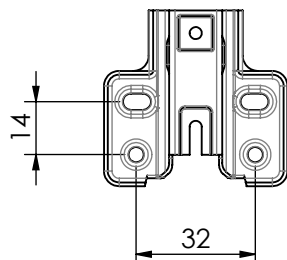
Caneco:



CORTE A-A



Calço:



Características:

Dobradiça para móveis em aço, de 4 furos, calço fixo, com pistão 35mm, sem proteção do braço e parafusos, com ângulo de abertura de 105 graus.

RENNA
— COMPONENTES —

Código: 3.650.2315	Denominação: Dobradiça Slide-on Calço Fixo Alta
Material: Aço	Observação: Com pistão
Data: 26/12/2016	Quantidade: 200 por caixa
(54) 32226666 www.renna.com.br vendas@renna.com.br	